

49/119

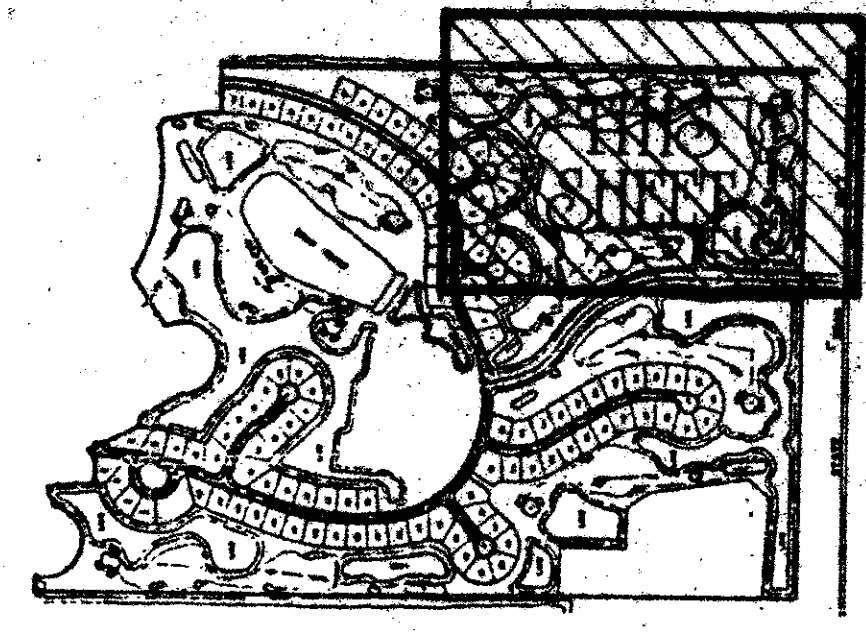
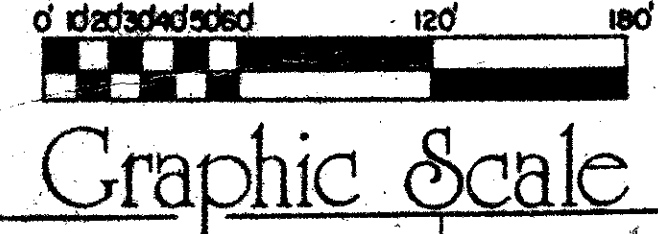
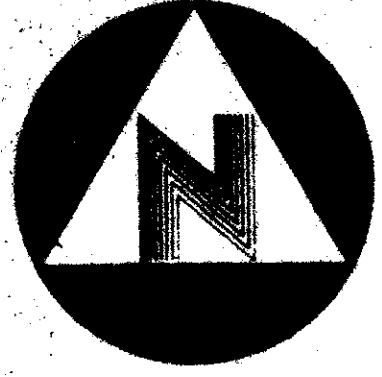
DRAWING NUMBER

DRAWING NUMBER

DRAWING NUMBER

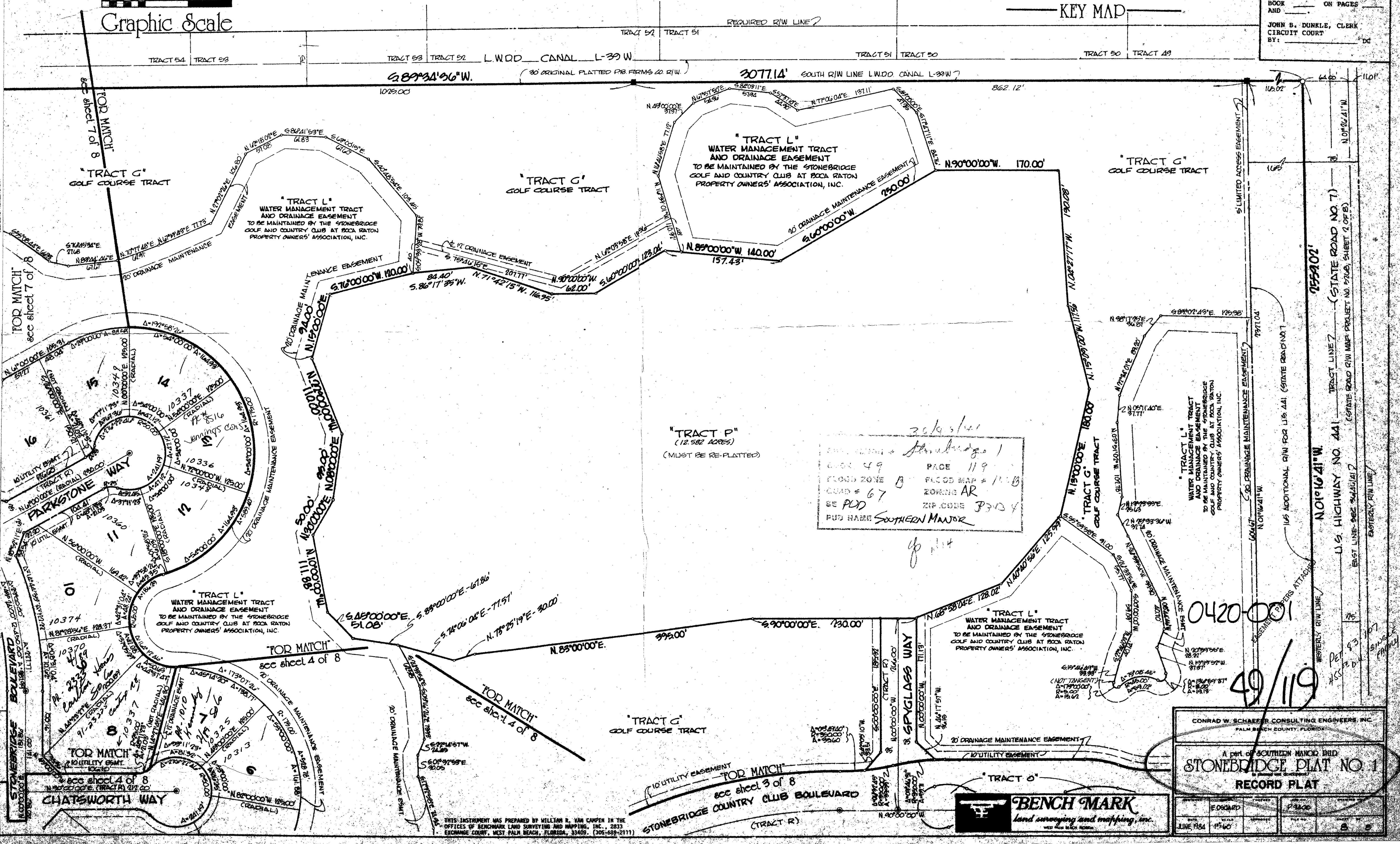
A part of SOUTHERN MANOR P.U.D. STONEBRIDGE PLAT NO. 1

(a planned unit development)
Lying in the South One-Half (S.1/2) of Block 69, Palm Beach Farms Company, Plat No. 3, Plat Book 2, Pages 45-54 (Inclusive),
Section 36, Township 46 South, Range 41 East, Palm Beach County, Florida
June, 1984
Sheet 8 of 8



49/ 119

STATE OF FLORIDA
COUNTY OF PALM BEACH
THIS PLAT WAS FILED FOR
RECORD AT _____ DAY OF
THIS _____, A.D. 1984
AND DULY RECORDED IN PLAT
BOOK _____ ON PAGES
AND _____
JOHN B. DUNKLE, CLERK
CIRCUIT COURT
BY: _____ DC



2/6/84
SOUTHERN MANOR
PAGE 119
FLOOD ZONE B FLOOD MAP # 11-B
ZONING AR
ZIP CODE 33024
RUB NAME SOUTHERN MANOR

0420-001

49/119

CONRAD W. SCHAEFER CONSULTING ENGINEERS, INC.
PALM BEACH COUNTY, FLORIDA

A part of SOUTHERN MANOR P.U.D.
STONEBRIDGE PLAT NO. 1
RECORD PLAT

EDWARD	1984	1560	8
LINE 1984	1560		

THIS INSTRUMENT WAS PREPARED BY WILLIAM R. VAN CAMPEN IN THE OFFICES OF BENCHMARK LAND SURVEYING AND MAPPING, INC., 2833 EXCHANGE COURT, WEST PALM BEACH, FLORIDA, 33409. (305-698-2111)